



Orthodontic Catalogue



LNG Dental

More Than Just Another Class II Appliance...

R2,900

2 pieces

1 x left

1 x right

Features

- Simple
- Flexible
- Effective



Introduction
by Dr. Yoav Mazor

GC Orthodontics
GLOBAL EXPERTS IN ORTHODONTICS

MULTI- F A

Multi-Functional Appliance for
Class II and Class III Correction



Experts in Orthodontics

GC Orthodontics

3737 W. 127th Street

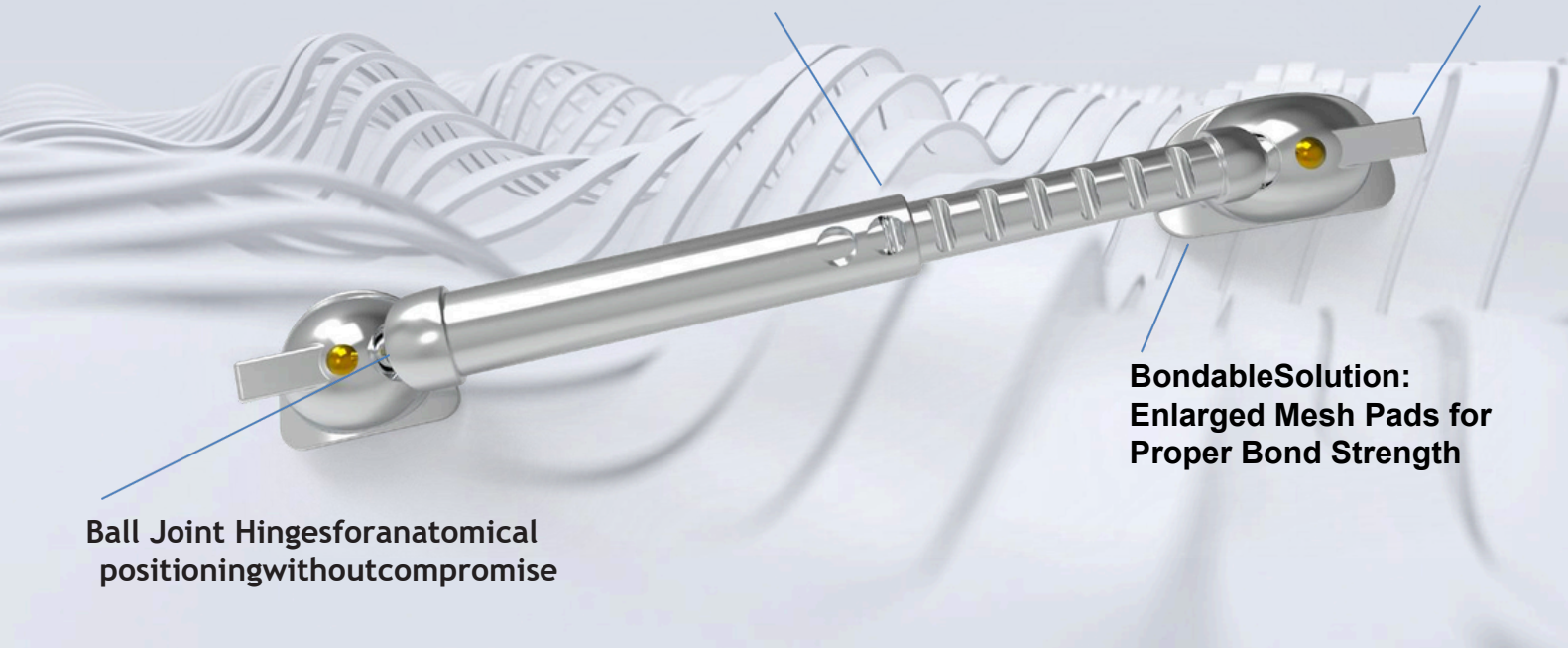
Alsip, IL 60803

www.gorthodontics.eu

MULTI-FA

Two-Piece design for a One-Size-Fits-All Adjustable Appliance

Versatile Dual Hook Design



Ball Joint Hinges for anatomical positioning without compromise

BondableSolution:
Enlarged Mesh Pads for Proper Bond Strength

Multiple Function Appliance

*Band Assembly Option Illustrated Below



- 92-5001-0000 MULTI FA REGULAR (left & right)
- 92-5002-0000 MULTI FA SHORT (left & right)
- 92-5003-0000 MULTI FA LONG (left & right)
- 92-5004-0000 MULTI FA BAND-R (left & right)
- 92-5005-0000 MULTI FA CRIMPABLE STOP (x10)



Differential teeth movements
Using closed coil spring / elastic chain / other

99-92ET-1300 - Rev000 - 09.2022



Since 1921
100 years of Quality in Dental

Experts in Orthodontics

GC Orthodontics
3737 W. 127th Street
Alsip, IL 60803
www.gcorthodontics.eu

The LEGEND™ collection is a traditional twin, metal bracket system available in a medium and mini size. LEGEND medium is manufactured by a Metal Injection Molding (MIM) and Computer Numerical Controlled (CNC) precision milling process for a consistent and precise bracket that features a 100% accurate slot and anatomically correct bonding pads for maximum bond retention.

R68
per Bracket

Bulk
5 +
R1 235

R1 360
per Kit

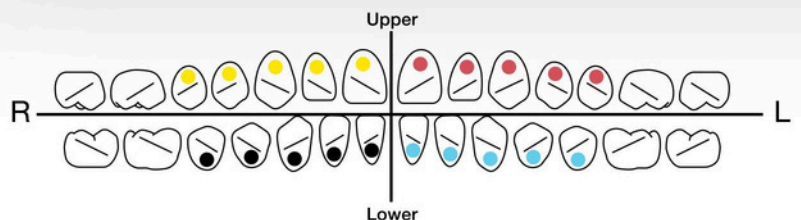


Design Features

- Made from aerospace strength steel
- Tumbled for a highly polished and better looking bracket
- Rhodium coated for better aesthetic
- Laser-fused hook options designed for malleability and strength
- Anatomically correct bonding pad for each tooth
- In/Outs compatible between medium & mini

LEGEND mini/medium Metal

Standard Metal Bracket



Brackets

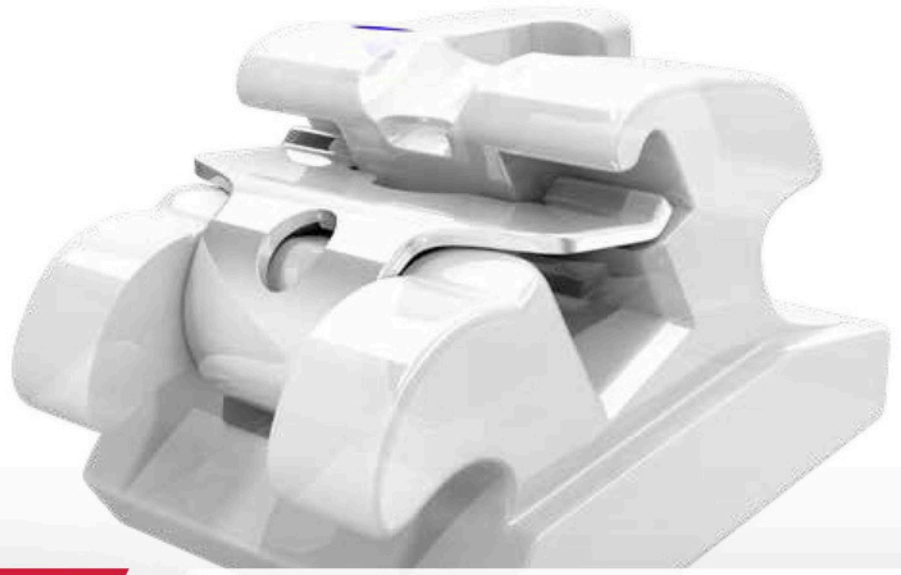


The EXPERIENCE™ collection of self-ligating orthodontic brackets offer doctors and patients a variety of options for their orthodontic treatment needs. EXPERIENCE™ brackets minimize friction during initial leveling and aligning and allow for increased torque and rotation control during finishing.

After the metal or ceramic injection process (MIM or CIM), there is a cooling down phase in which the mold retracts. TOMY then incorporates an extra step to make the archwire slot consistently precise, using Computer Numerical Controlled (CNC) milling to ensure that every slot in the EXPERIENCE™ collection is exactly .018" or .022". All TOMY archwire slots will then express the exact torque and angulation built into each bracket providing a more predictable result.

R360
per Bracket

R7 200
5 + Kits.
Per Kit R6900



Self Ligation Features

- Increased patient comfort
- Reduced chair time
- Fewer office visits necessary
- Shortened treatment time
- Improved patient hygiene
- Pleasing aesthetics

SL Product

Hi Aesthetic

EXPERIENCE™

ceramic

Self-Ligating ceramic treatments



Passive

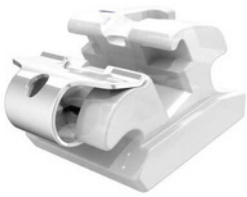


Interactive



Active

Self Ligating



Experience Ceramic

Discreet when in the mouth, its excellent bond strength and its mechanical properties made it the reference in aesthetic appliances. Its clip is rhodium-coated and melts into the look of the ceramic body of the bracket. First order information is compatible with Experience metal brackets. When both bracket types are present on the same arch, your appliance remains consistent.

Normal
R360
Kit - R7 200
Bulk (5+)
Kit - R6 900



Experience Metal

Interactive brackets became the worldwide best-selling self-ligating systems. Low friction and control are the most sought-after parameters in orthodontic appliances. Experience metal gives you more: • accuracy of the information the practitioner selected • perfectly adapted anatomical bases (micro sandblasted),

Normal
R150
Kit - R3 000
Bulk (10)
Kit - R2 900

limiting bond failures



Experience Lingual

Experience L is THE lingual interactive orthodontic bracket. Its easy access golden clip makes archwire changes more practitioner-accessible and shortens treatment time to the greatest satisfaction of patients. Its small size limits speech problems and bond failures.

Normal
R330
Kit - R6 600
Bulk (5+)
Kit - R6 300

Traditional



Chic

- Distal-gingival color ID
- Long axis scribe line for easier bracket orientation
- Torque in base
- Large undercuts for easy ligation
- Molded mechanical base for greater bracket retention and more predictable bracket removal

Normal
R150
Kit - R3 000
Bulk (5+)
Kit - R2 900



Legend Mini

Normal
R68
Kit - R1 360
Bulk (5+)
Kit - R1 235



Single Access Tube

R42
Each

Brackets & Accessories



Buttons

Y/A101-01

R120
10 Pieces



Bondable Eyelet

Y/A101-11

R120
10 Pieces



Crimpable Hooks

Y/A102-013 (Short) Y/A102-011 (Long)

R150
10 Pieces



Niti Closed Coil Spring

3mm - Y/CSO1003. 6mm - Y/CSO1006. 9mm - Y/CSO1009. 12mm - Y/CSO1012

R120
10 Pieces



Tongue Tamers

Y/A103-01

R95
Per 10



LUXE Series Bondable Buccal Tubes

Roth/MBT/Edgewise .018 and 0.22.

R220
Per 10

Buy 50 Tubes per quadrant at R1870 per tube



MIM - B Mini Series Metal Brackets

Roth/MBT .018 and .022.

R190
Per Kit

Buy 50 Kits + 15 FREE



Wires

Wires	Round Per 10	Rectangular Per 10
Niti		
Heat Activated	R50	R68
Niti Reverse Curve	R65	R85
Beta Titanium	R110	R180
Stainless Steel	R330	R450
	R40	R48

Buy 5 packets + 1 FREE



Miscellaneous



Elastic Placers

R120
per 100

Y/HK01M



Patient Wax (Assorted)

R350
per 50

Y/HK06



Micro Applicators

(available in extrafine, fine, medium, large & extra large)

R120
per 4 tubes



Patient Car Kits

R480
per 10

Elastic Organiser (Powerchain)

R360
15 Chains

YYK17



Elastic Organiser (Sani-ties)

R550
150 Sani-ties

YYK16



Elastic Organiser (Sani-ties and PC)

R680
240 Sani-ties
and 12 PC's

YYK15





T.K.O.®

MULTI-PURPOSE COMPOSITE

R760
3.5g syringe

RELIANCE ORTHODONTICS INTRODUCES

TKO Composite Paste

Light Cure Multi-Purpose Composite

TKO is a versatile composite with strength and a low modulus of elasticity. TKO composite paste is effective in both laboratory and chairside applications.

ONLY FROM RELIANCE®

Proprietary Working Properties for Specific Applications

CURES STRONG AND SMOOTH WITH MODEST PLIABILITY

- Resists Opposing enamel wear
- Soft cure resin matrix for patient comfort

VISCOSITY PERFECTED FOR VARIED APPLICATIONS

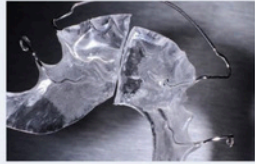
- Controlled needle tip dispensing
- Flexes and recovers with acrylic appliances

PINK SHADE

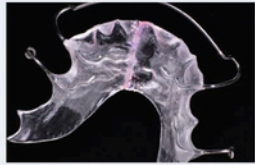
- Aids in placement, removal and clean up
- Matches acrylic appliances



NOBODY KNOWS
COMPOSITES
LIKE RELIANCE!



ACRYLIC APPLIANCE REPAIRS



OCCUSAL BUILD-UPS



BITE OPENING RAMPS



LABORATORY BLOCK OUT APPLICATIONS



TKO INSTRUCTIONAL VIDEO AVAILABLE AT [RELIANCEU.TECH](https://relianceu.tech)



LNG Dental



GC Ortho Connect

One Step System

No need to apply primer or adhesive on the tooth, as it is already incorporated into the paste. A simple etching of the enamel followed by drying is enough to prepare the bracket or buccal tube for bonding.

R2 160
2 x 2.9 g
Syringes

90-1100-000



When using GC Ortho Connect, no primer is necessary, since it is already incorporated into the adhesive, thus creating a simplified bonding process that reduces costs.

The adhesive's ideal viscosity insures reliable and precise bracket placement.

An ergonomic syringe guarantees accurate dosage, providing a practical and economic adhesive solution. The syringe's cap prevents dry out and thus decreasing potential waste.

Excess adhesive is detected by a black light, which aids in fast and efficient cleanup.



GC Revotek LC

Single-component temporary C&B material delivered as a stick no mixing or pre-impression simple to use. (Cut, shape and cure).

LNG/Revotek

R 2 200



Light Cure Retainer

REL/LCR

R1 075
5g syringe



Flow Tain and Flow Tain LV

- Flow Tain and Flow Tain LV are light cure composites.
- These materials are very smooth when cured which will reduce wear and enhance patient comfort
- 7 gm Bonding Resin Part A With Fluoride 7 gm Bonding Resin Part B

REL/FT. REL/FTLV

R825
1.5g syringe



Ultra Band Lok Blue Syringe

REL/UBLBPP

R920
5g syringe



Light Bond

LightBondbluepaste comes in a 5 gram push syringe with Fluoride.
REL/LBPPF

R950
5g syringe



Bond Aligner

Bonds Attachments To Clear Aligners

- Secure aesthetic bonds
- Bond to any clear aligner material
- No primers or conditioners
- Clear light cure paste
- High modulus of elasticity
 - Conforms to aligner distortions
 - Secure bonds throughout
- Bond ceramic, metal or plastic attachments

REL/BA

R1 730
1.4g syringe



ReliaWax

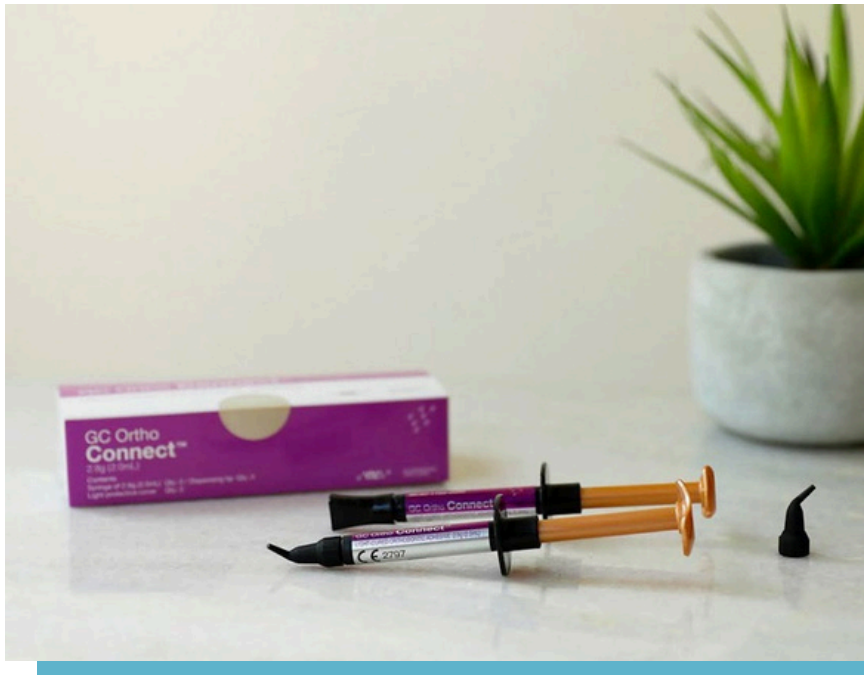
ReliaWax is a reliable and revolutionary wax-like protection in a syringe that provides enduring

comfort for your patients.

REL/RWX

R460
1.5g syringe





GC Ortho Connect

GCOrthoConnect can bond any kind of metal, ceramic brackets and tubes. No primer phase is needed as it is contained in the paste. Bonding excesses can be seen with a black light.

R2 160
2x2.9g
syringes

Reliance Orthodontic Products, Inc.

RELIANCE
ORTHODONTIC
PRODUCTS

GoTo[®] R6 100
Mold Kit

LIGHT CURE BRACKET ADHESIVE

- ✓ Proven bond strength and consistency
- ✓ Translucent finish matches any tooth shade
- ✓ Easy removal and cleanup
- ✓ Proprietary filler construction provides unprecedented control

Make it Your GoTo.

R900
1 x 4 g
syringe



 **RELIANCE**
ORTHODONTIC
PRODUCTS

One bottle. Every surface.

Assure Plus bonds to it all.

-  wet or dry enamel
-  atypical or normal enamel
-  any artificial surface

**Reduce bond failures.
Reduce products chairside.**

**R3 675
6ml**

Assure Bonding Resin



The Original Universal Bonding Resin.

- Bonding primer and enhancer
- Typical or atypical enamel
- Metal and composite restorations

REL/AS

**R3 040
6ml**

GoTo Light Cure Bracket Adhesive



- Proven bond strength and consistency
- Unique viscosity easily penetrates bracket pads
- No bracket drift – stays in place until cured
- Translucent finish matches any tooth shade
- Maximum bond strength
- Easy removal and cleanup

UVdisclosing agent – fluoresces on tooth
REL/GTP

**R900
4 g syringe**



Phase II

Mix Paste Bracket Adhesive – Chemical Cure.

- Microfilled paste
 - Unrivaled strength
 - Smooth, tacky viscosity
 - No bracket drift
- Self curing
 - Full polymerization
 - A&B mix system
 - 2 minute working time
- Easy removal and cleanup
- Contains fluoride

Paste A - REL/1PSAF. Paste B - REL/1PSB

R530
6g syringe



Excel

Chemical Cure Specialty Adhesive.

- Unsurpassed bond strength
- Thin, creamy consistency
- Extended working time
- Contains fluoride

Paste A - REL/1ERSAF. Paste B - REL/1ERSB

R675
6g syringe



Rely•a•Bond

No Mix Bracket Adhesive.

1 Step/Contact Adhesive

- Contact cure - primer to paste
- Chemical cure – no light required
- Saves time and material
 - No mixing
 - Minimizes adhesive per bond
- Highly filled paste
 - Increased bond strength
 - Tacky viscosity
 - Prevents bracket drift
- Contains fluoride

REL/1RPP

R510
3.5g syringe



Rely•a•Bond Kits

All Rely•a•Bond® kits include:

- 14g Paste
- 16g Primer
- 9g Etchant
- Spatulas, Brushes & Mixing Pads

REL/RPF

R4 385
per kit



Blue Gel Etchant

- Controlled and even application
- 37% phosphoric acid
- Excellent for lingual retention or large acrylic appliances
- Contains anti microbial B. A. C.

REL/BEGS

R440
5g syringe



Gel Etchant

- 37% phosphoric acid
- Controlled application

REL/EGSS

R405
6.5g syringe



Porcelain Conditioner

For Bonding to Ceramic Crowns

- Effective with: porcelain, zirconia and lithium disilicate

REL/PO

R795
8ml



Porcelain Etch

Porcelain Etching Agent with Barrier Gel.

REL/POE

R810
9g gel



Pro Seal

Enamel Protection From Start To Finish.

- Two year surface protection
- University tested in over 15 studies and clinically proven
- Sets without oxygen inhibited layer - smooth, hard finish
- Fluoresces under UV light
- Patented catalyst system

Original Pro Seal cures in 360 to 420 NM range.

REL/PRO

R2 785



Light Bond Sealant

Light Cure Resin.

- Bonding primer and sealant
- Available with or without quartz filler

REL/LBS3F

R745
3 ml

Renew Finishing Burs



Renew Bur 118S
REL/RSB

R270
Each



Renew Bur 218
REL/RSB2

R270
Each



Renew Bur 118L
REL/RSBL

R315
Each



Renew Bur 815
18 fluted carbide
Quick removal of bulk composite
Gentle on enamel
• Use with or without H2O
REL/RSB815

R390
Each

Renew Finishing Points



Straight Hand Piece
REL/RSPHP

R1 115
Per 12



Latch
REL/R SPL

R1 115
Per 12



Friction Grip
• Polishes tooth surface
• Black point discloses when composite is fully removed
• Removes residual composite
• Does not create heat
REL/RSPFG

R1 115
Per 12

Finishing & Polishing



First and Final Prophy Pumice

R910
Per 200 cups

- Pre-packaged - sterile cups for individual patient use.
- Pre-mixed - just open and apply with prophy cup
- No added chemicals - no flavoring, fluoride or oils
- Enamel polisher - 1st & Final can be used as the final polishing step with the Reliance Renew Finishing System

REL/FF



Restore Polishing Paste

R1 485
2 g syringe

Diamond Polishing Paste for restoration of glaze on artificial surfaces.
REL/RESPP2





Ortho FlexTech

Flexible Lingual Retainer.

- Secure and stable long term passive retention
- Patented interlocking chain design
- Adapts to lingual anatomy
 - No bending or burnishing
- No models or impressions
- Flexes interproximally
 - Resists breakage and bond failures
- No reciprocal forces – allows for minor biological movement – will not take an active bend
- Stainless steel offers increased tensile and torsional strength
- Different material choices
 - White Gold (original)
 - Nickel Free Gold
 - Nickel Free Gold – etched
 - Stainless Steel – increased strength
- Lowprofile – patient comfort
REL/SSOFT

R3 155
30" chain



RETAINIUM XL

Fixed Retention with Titanium Molybdenum.

- Flat .027" x .016" ribbon arch
- Low profile – comfortable and functional
- Increased strength
- MRI compatible
- Easy adaptation
- Nickel free titanium construction
REL/XLRET

R1 455
Per 10



Bond-a-Braid Lingual Retainer Wire

- Permanent retention is greatly enhanced using a flattened, dead soft braided wire. Intra-arch splinting with this thin ribbon arch prevents torque control problems that can occur using a round braided wire for these procedures
REL/BAB

R1 295
Per 10



Retainium Wire

Singlestrand NICKEL FREE titanium, flat metal ribbon with increased interproximal strength is ideal for semi permanent splinting and maintaining difficult extraction sites.
REL/RET

R1 445
Per 10



Lingual Retainers 1 - 1

- Bondable lingual retainer
- Available in small, medium and large

R35
Each



Lingual Retainers 3 - 3

- Bondable lingual retainer
- Light cure/Mesh bond. 30 - 39 mm or solid base

R45
Each



Palatal Arch Bar

- Specially tempered wire provides predictable tooth control
- Mesial loop/Distal loop
- Size: 35mm-55mm

R105
Pack of 5



Ligature Ties

- For quick tightening of ligatures with twist mate
- Sizes: .10"

R1 350
Pack of 1000

67-0210-0010



Kobayashi Hooks

- Time Saving k-hooks are easily tied in place without removing the archwire
- Our hooks are streamlined for easier and quicker tying of mini brackets

R258
Per 100
Pre-twist

.012 - 67-0120-0012 } Pre-twist
.014 - 67-0120-0014 }



Preformed Ligature Wire

Foam sleeve colours:

.008 - Yellow	67-0110-0008
.009 - Green	67-0110-0009
.010 - Blue	67-0110-0010
.011 - Pink	67-0110-0011
.012 - Gray	67-0110-0012

R690
Pack of 600



Caplin Hooks

Lingual attachments aid in the seating and positioning of the band as well as accepting maxillary and mandibular appliances such as palatal bars and quad helix appliances Curved - 42-0030-0000 Flat - 42-0040-0000

R320
per 10



Ceramic Button Freddy

The Freddy ceramic button* is the perfect clear utility button for all aesthetic appliances.

- Works lingual as well as labial
- The Oral surgeons use them whenever clear appliances

R2 010
per 10

- are indicated
 - Mesh structure of base makes a strong bonding
 - Bonds well with most common adhesives
 - Enough space around tie wing for all elastics
 - Maintains the transparent look for aligners as anchorage for elastics
- LNG44 - 1010-0001



Crimpable Stops

LNG66 - 0120-0002

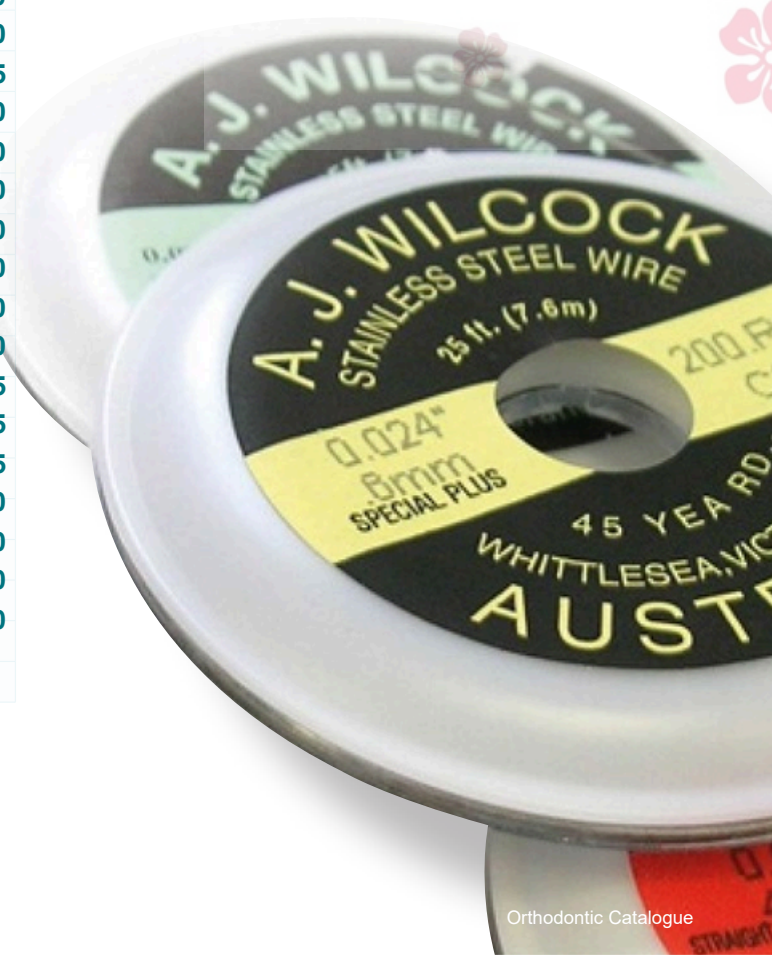
R280
per 20

Wires & Accessories



PRODUCT NO.	DIAMETER	GRADE	PRICE
229-000	0.012"	Regular	
230-100	0.014"	Regular	R570
231-300	0.016"	Regular	R365
232-400	0.018"	Regular	R365
233-500	0.020"	Regular	R365
234-600	0.022"	Regular	R365
235-700	0.024"	Regular	R365
229-010	0.012"	Regular Plus	R650
230-110	0.014"	Regular Plus	R450
231-310	0.016"	Regular Plus	R450
232-410	0.018"	Regular Plus	R450
233-510	0.020"	Regular Plus	R450
229-020	0.012"	Special	R730
230-120	0.014"	Special	R530
231-320	0.016"	Special	R530
232-420	0.018"	Special	R530
233-520	0.020"	Special	R530
229-030	0.012"	Special Plus	R815
230-130	0.014"	Special Plus	R610
231-330	0.016"	Special Plus	R610
232-430	0.018"	Special Plus	R610
233-530	0.020"	Special Plus	R610
234-630	0.022"	Special Plus	R610
235-730	0.024"	Special Plus	R610
229-040	0.012"	Premium	R895
230-140	0.014"	Premium	R690
231-340	0.016"	Premium	R690
232-440	0.018"	Premium	R690
233-540	0.020"	Premium	R690
228-050	0.010"	Premium Plus	R980
228-150	0.011"	Premium Plus	R980
229-050		Premium Plus	R980
230-150	0.012"	Premium Plus	R775
231-350	0.014"	Premium Plus	R775
232-450	0.016"	Premium Plus	R775
226-060	0.018"	Supreme	R1 060
227-060	0.008"	Supreme	R1 060
228-060	0.009"	Supreme	R1 060
228-160	0.010"	Supreme	R1 060
	0.011"		

Hard Drawn Stainless Steel Wire Spools (25ft)





Mini Curing Light

The mini curing light has a spectrum range of 450-490nm, high light intensity, autoclavable, a 1,000 hour 'solid state' LED bulb and a life time warranty. Requires AAAA batteries. OAR/800-510

R1 080
Each



Posterior & Anterior ARS Stripping Burs

Used for rapid enamel reduction. OAR/700-466

R655
Per 5



Eruption Appliance

- Facilitates eruption of impacted teeth
 - Bondable to impacted cuspid intended to minimize irritation
 - Round mesh bonding pad
 - Gold plated
- OAR/270-650

R760
Per 5



IPR Diamond Discs + Mandrel

Flexible design for both reduction and contouring. OAR/700-460. (Single) OAR/700-461 (Double)

R920
Per 2 single

R920
Per 2 double



NiTi Spools

Sizes: .012, .014, .016
OAR/226-081. OAR/226-082. OAR/226-083. OAR/226-084

R570
Per spool



NiTi Open/Closed Coil Springs/15''

Sizes: .010''x.030''.
OAR/226-240 (Open)

R435
Per 15'' spool



Stainless Steel Open/Closed Coil Springs

Stainless steel. Sizes: .010''x.030''
OAR/270-040 (Open) OAR/270-060 (Closed)

R225
Open coil

R345
Closed coil
Per 40'' spool




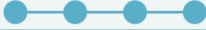

Bite Ramps

OAR/270-216

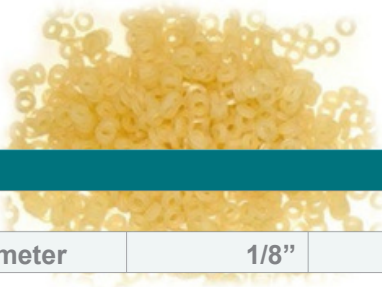
R705
Per 10

Elastomerics & Accessories



Colours	Code			
		Bite-Size Ties	Short	Long
Gray	300-200	700-300	700-400	700-500
Clear	300-201	700-301	700-401	700-501
Neon Pink	300-202	700-302	700-402	700-502
Neon Green	300-203	700-303	700-403	700-503
Purple	300-204	700-304	700-404	700-504
Red	300-205	700-305	700-405	700-505
Royal Blue	300-206	700-306	700-406	700-506
Black	300-207	700-307	700-407	700-507
Orange	300-208	700-308	700-408	700-508
Yellow	300-209	700-309	700-409	700-509
White	300-210	700-310	700-410	700-510
Ivory	300-211	700-311	700-411	700-511
Emerald	300-212	700-312	700-412	700-512
Turquoise	300-213	700-313	700-413	700-513
Aqua/Light Blue	300-214	700-314	700-414	700-514
Silver	300-215	700-315	700-415	700-515
Gold	300-216	700-316	700-416	700-516
Magenta	300-217	700-317	700-417	700-517
Kelly Green	300-218	700-318	700-418	700-518
Marigold	300-219	700-319	700-419	700-519
*Sparkle Green	300-220	700-320	700-420	700-520
Smoke Gray	300-221	700-321	700-421	700-521
Teal	300-222	700-322	700-422	700-522
Fuchsia	300-223	700-323	700-423	700-523
Midnight Blue	300-224	700-324	700-424	700-524
Glow In Dark	300-225	700-325	700-425	700-525
Periwinkle	300-226	700-326	700-426	700-526
Carolina Blue	300-227	700-327	700-427	700-527
Baby Blue	300-228	700-328	700-428	700-528
*Sparkle Red	300-229	700-329	700-429	700-529
*Sparkle Blue	300-230	700-330	700-430	700-530
Baby Pink	300-231	700-331	700-431	700-531
Lilac	300-232	700-332	700-432	700-532
Pearl	300-233	700-333	700-433	700-533
Coral	300-234	700-334	700-434	700-534
	R325	R280	R280	R280
	per 1008	per spool	per spool	per spool

All colours are approximate - *Metallic colours shown are the base colour without the metal flake.



Intra-Oral Elastics (Latex & Non-Latex)

PATIENT-SIZED QUANTITIES							
50 bags of 100 elastics/bag (5,000 elastics)							
Diameter	1/8"	3/16"	1/4"	5/16"	3/8"		
Bag Color							
	Purple	Green	Red	Blue	Orange	LATEX	R760
2.5oz. Light	811-001	811-003	811-006	811-009	811-012		
4.5oz. Med	000	811-004	811-007	811-010	811-013		
6.5oz Heavy	811-002	811-005	811-008	811-011	811-014	NON-LATEX	R835

All catalogue numbers are given for latex. For non-latex, add "NL" to number when ordering.



Separating Elastics

These separators are radio opaque and made from elastomeric material. They are designed to separate teeth more rapidly due to it's faster recovery and are easily placed with the Deluxe Separating Plier. 1000 per package.

OAR/325-302



R450
1000 Pieces



Rotation Wedges

- Designed to aid in rotating teeth more quickly (Clear or Gray).

OAR/270-021. OAR/270-022

R630
Pack of 100



Bite Correction Elastics

Designed to aid in rotating teeth more quickly.

MSD/60-01-330. MSD/60-01-430

R165
Pack of 100



Elastomeric Thread

- Unmatched strength and rebound
- Hollow and square variations are available for Available in .025" and .030" diameter sizes, in clear and gray colour variations
- Available in spools of 25 feet

OAR/340-105/110.025
OAR/340-125/130.030

R260
per Spool



Archwire Tubing

- Archwire tubing comes in a 25 foot spool and is designed to reduce irritation from the archwire
- Available in .025" and .030" diameter sizes, in clear and gray colour variations

OA3/340-205/210.025
OAR/340-225/230.030

R260
per Spool

Proximal Tool System



DentaSonic Starter Kit Water cooled

For monolateral interdental reduction of the tooth size and the proximal finishing and polishing in orthodontics, aligners, and/or restorative. New water cooled oscillating Hand Piece with 4:1 ratio, in addition also a separate Head (rotating), for burs or polishers with RA Ø 2.35mm, and one measuring gauge with 6 thicknesses.

DSG4A-204-1Y

R21 850
Starter kit
(1 Year guarantee)



DiaStrip

R2 700
per 5

Indications

- Opening of the interdental contact points
- Widening of the interdental spaces in orthodontics by bilateral controlled benefits size reduction
- Resolve of minor crowding and treatment finishing in orthodontics
- Bilateral approximal enamel polishing



DiaSaw

R3 174
per 5

- Efficient, safe, gentle, and agreeable opening of the interdental contact points
- Rapid and controlled reduction of the enamel
- Proximal contouring, finishing and polishing of both adjacent teeth in a single procedure with special flexible resin diamond coated strips



Abrasive Strips

- Interproximal reduction a common activity in many Orthodontic cases
- The Abrasive strip kit provides manual operation which means accurate, safe control

HOR/304 (Single sided) HOR/314 (Double sided)

Essix

R300
Single sided

R450
Double sided

Flexview IPR Strips

- Use for optimal visibility during interproximal stripping
- Gateway area allows easy access for IPR stripping
- Autoclavable in aluminum tube

From R3 580
Pack of 10

Lab Supplies

Essix



Essix Ace Plastic

Primary Use: Aligners & Retainers

- Clear material has protective film on both sides
- Also used for tooth movement aligners and temporary

R4 985
100 Sheets

- anterior bridges
- Store in a cool dry place
- Average life: 18-24 months

Essix Plastics are Latex and BPA Free

Essix Plus Plastic

Primary Use: Retainers & Bruxism Appliances

- Also use for aligners and temporary bridges
- Easy to form and trim, excellent wear and impact

R6 435
80 Sheets

- resistance
- Accepts acrylics/bonding agents
- Not made with natural rubber latex or BPA

Essix C+ Plastic

Primary Use: Aligners & Retainers for Bruxers

- Not for use with acrylics/bonding agents
- Average life: 24 months
- Also use for bite planes
- Latex and BPA free

R3 465
100 Sheets

Retainer Retrievers

- Retainer retrievers help to alleviate problems associated with removing clear appliances
 - Available in blue, green, orange, pink and white
- ESS/RR-ITSP. ESS/RR-ITSB

R575
Pack of 10



Lab Supplies

Essix



EssixBrand Plastics

Essix A+ Plastic

Bite Planes

- Average life: 6 months
- Clear material has blue both sides
- Accepts acrylics/bonding agents
- Also used for night guards, clenched and grinders
- Store in a cool, dry place

From R2 995
100 Sheets



Essix Dual Laminate

PrimaryUse: TmjSplints

- Dual-sided construction: hard top surface withstands mastication pressure while soft bottom surface provides patience comfort
- Accepts bonding agents
- Also used for night guards, clenched and grinders

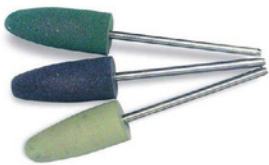
R4 230
12 Sheets



Lab Knife

Good for cutting distal ends on Essix appliances and for cutting windows in aligners for tooth movement.
ESS/18800

R560
Each



Border Polisher - Combination Set

- Smooths edges of appliances
 - For use with Cordless Dremel or slow-speed handpiece at a maximum of 10 000 rpm
- Fine - ESS/18971 Medium - ESS/18972
Course - ESS/18973 Set - ESS/18970

R440
Each

R1 125
Set of 3



Polishing Brushes

- Ideal for polishing edges of appliances
 - Use with cordless dremel
- Fine - ESS/18983 Medium - ESS/18982
Course - ESS/18981

R1 325
Pack of 12



Multi-Adjustable Face Mask

- Free flow air vents
 - Maximum patient comfort
 - Full range of motion
 - Reinforced crossbar
 - Fully adjustable
 - Light weight
 - Screws designed for increased durability
- Y/500-010 Red
Y/500-011 Blue

R476
Each



Cephalometric Tracing Paper

Smooth matte surface and transparent quality gives extra clean, sharp lines when tracing Radiographs.

OAR/700-058

R1 190
per 100 sheets



Impression Trays

- Colour coded for easy identification
- Unique mechanical lock system eliminates need for spray adhesives

R350
Pack of 10



MicroBrush™

Used to apply sealants, etchants or primers with sponge like tip.

MR/A400

R1 740
per 4 tubes



Retainer Cases

Y/DB18

R300
Pack of 20



Patient Relief Silicone Wax

- Medical Grade Wax
 - Temporary relief of appliance irritation
 - Longer lasting and easier to use
- OAR/700-104

R1 130
Pack of 10

Essix



Retainer Brite Cleaning Tablets

36 Boxes

- Retainer Brite Cleaning Tablets are specially formulated to help protect removable appliances by preserving clarity and cleanliness
- Cleans & Brightens Removable Dental Appliances
- Kills 99% of 7 Common Odor-Causing Bacteria
- Helps Remove Plaque & Tartar

ESS/RB-36 (Case)

R200
(1 box of 36 tabs)
R4 080
Bulk (1 x 24 boxes
of 36 tabs)



Aligner Tray Chewies

- Help patients seat aligners correctly.
- Chewies Aligner Tray
- Seaters are the same size as a standard dental cotton roll
- Made from soft plastic. Hygienic and easy to use

R350
10 x 12 Seaters
per pack

Lab Supplies

Essix



Trimming Wheel

Trim appliances with this high-quality, rigid one-piece tool.
ESS/18320

R975
Each



3 1/4" Crown & Bridge Scissors

•• Designed for precise trimming, especially for the palatal or lingual on full arch appliances
Autoclavable
ESS/18002

R765
Each



5 1/2" Mayo Scissors

•• Ideal for cutting the labial outline on Essix® appliances with minimal jagged edges.
Curve of the scissors follows the curve of the arch
Autoclavable
ESS/18001

R765
Each



8" Universal Shears

•• Excellent for quickly trimming excess plastic and more rigid materials.
Heavy-duty stainless steel
Serrated edges
Easygrip handles
ESS/18005

R975
Each



4" Curve Scissors

•• Help obtain a clean, smooth edge on the lingual anterior region of Essix® appliances.
Ideal for bleaching trays
Autoclavable
ESS/18004

R3 690
Each



Accentuator Tool

•• Ensures a snap-in fit
Guides plastic down into the interproximal undercuts
ESS/18943

R1 395
Each

NEW PRODUCT

Welcome to your new
Brilliant Smile



GloboDent
innovative dental solutions



Teeth



BlanQuest Pro Whitening Treatment Kit

The BlanQuest Professional Whitening Treatment provides the most effective solution towards a brilliant white smile. Give your patients a noticeably whiter smile in minimal time in just one in-office procedure: 3 to 8 shade improvements in only 45 minutes!

R2 476
per kit



The BlanQuest Home Whitening Kit

The New BlanQuest Home Whitening Kit is a perfect option for patients looking for a safe, effective, and simple to use at home whitening procedure. It is a professional alternative that can deliver powerful results while also perfect for follow-up and maintenance purposes in an inexpensive manner.

R876
per kit



LuxBrite Personal Teeth Whitening System

GloboDent proudly introduces the LuxBrite Personal Teeth Whitening System, the smartest choice for your teeth! Operable with any smart device, LuxBrite is the obvious solution for teeth deep whitening at the comfort of one's home. By combining our safe and effective whitening formula with our 16 powerful LED lights, the LuxBrite is the ideal solution for whiter teeth for up to 15 sessions.

R1 904
per kit



R952
set refill



For the full range of instruments and prices contact us



Distal End Cutter Safety Hold

This instrument cuts the wire close to the buccal tube and safely holds the distal end. The T.C. inserts ensure precision cutting, long wear and unsurpassed cutting performance.

OAR/800-015

R1 890



Hard Wire Cutter

This instrument is designed to cut larger wire up to .022 x.028.

OAR/800-023

R1 890



Mini Ligature Cutter

The fine tips on this model allow access into hard-to-reach areas. It is designed to cut soft-wire pins, elastics, and ligature wire up to .012.

OAR/800-0163

R1 890



Weingart Utility Plier

This instrument features matching serrated tips that hold wires firmly at a convenient working angle. Carefully tapered beaks fit easily between brackets and are rounded for safety and comfort. It can hold round and rectangular wires up to .022x.028.

OAR/800-004

R1 845



Ultimate Hook Crimping Plier

This preformed ligature tie is pre-trimmed to save time. Easily placed with a Mathieu Needle Holder or Shorty Twist Holder.

OAR/800-083N

R1 845

Infection Control



Cleansing Wipes

HOSPITAL GRADE For Neutralising Pathogens on ALL SURFACES. Does not contain any known Carcinogenic Agents. Medium Level: Kills 99.999% bacteria, viruses, fungi, mildew & algae. pH Neutral. Wipes can be disposed of in regular landfills as they are biodegradable.

Medical
R135
(Per 150)
R235
(Per 500)
Disinfectant
R120
(Per 150)
R225
(Per 500)



Cold Sterilant

Cold sterilisation and disinfecting of surgical instruments.

R235
(1 litre)
R840
(5 litre)



Ecohand Soap (Kiwi)

PH Neutral hand wash. For use in the industrial, commercial and household market.

R125
(500 ml)
R135
(1 litre)
R655
(5 litre)



Sterigel (Citron)

Your hands take a beating when washed with harsh soap. Protect them with Sterigel.

R315
(500 ml)
R105
(1 litre)
R490
(5 litre)



Bacterinil

Abroadspectrum, ready-to-use disinfectant.

R200
(1 litre trigger)
R560
(5 litre)

Infection Control



Alcohol Hand Rub

Alcohol-based hand rub is the recommended method of hand hygiene in any healthcare setting when hands are not visibly soiled., HOSPITAL GRADE.

R44
(500ml lotion pump)
R257
(5 litre)



Instrument Cleaner

For deep cleaning and conditioning of surgical instruments prior to sterilisation.

R250
(1 Litre)



Suction Cleaner

For deep cleaning and conditioning of surgical instruments prior to sterilisation.

R305
(1 Litre)



Bur Cleaner

Ready to use solution for the simultaneous disinfection and cleaning of rotary instruments in surgeries, laboratories and clinics.

R155
(1 litre)



Infection Control



MicroSolve

CLEANS, SANITISES & DISINFECTS IN ONE
MicroSolve provides a three-in-one formulation that cleans, sanitises and disinfects. MicroSolve is specifically formulated for conditions where natural oils, grease and petroleum jelly can be problematic. MicroSolve works effectively to eliminate all residues.

R180
(1 litre trigger)
R590
(5 litre)



Sterifog

Anti-microbial misting involves the use of Sterifog and an aerosol micron diffuser. Dry mist permeates an area of up to 50 cubic metres.

R190
Fogger (500ml)
R155
Spray (350ml)



Dewax

A powerful, ready-to-use natural cleaner with an active ingredient called D-limonene. One of nature's most powerful solvents. D-limonene is derived from the peels of oranges, this means that not only is DeWax™ tough on grease, grime and dirt, but it is also made from completely renewable resources and leaves your home, shop, or workshop smelling citrus-fresh! DeWax dissolves most oils, waxes, glue and ink.

R105
(250 ml)
R165
(500 ml)
R315
(1 litre)



OrganoMax

ORGANOMAX™ is a powerful, fully biodegradable water based heavy duty organic degreaser developed for extremely tough jobs. This industrial strength user-friendly degreaser is designed to clean tough burnt-on grease and areas of heavy grease build up.

R99
(1 litre trigger)
R260
(5 litre)



SELECTION AND USE OF DISINFECTANTS

The effectiveness of a disinfectant depends on many factors:

- Toxicity (all disinfectants are potentially harmful to animals and people – differences are only a matter of degree).
- Biodegradability (decomposition of organic material by microorganisms).
- Corrosivity (the destructive, harmful, deleterious effect on fabric and metals).
- Activity in organic matter and other compounds, such as soaps (is it neutralised by organic matter?).
- Residual activity (length of continued activity post application).
- Efficacy (speed, and scope of viruses, bacteria and fungi).
- Contact time (Time required for surface to remain wet in order for germicidal activity to take place.)
- Price (quality comes at a cost).

PROPERTIES OF CHEMICAL SANITISERS AND DISINFECTANTS

Corrosiveness		Residual activity	Effect of hard water on sanitisation	Effect of organics	Germicidal activity	Activity against gram positive bacteria	Activity against gram negative bacteria	Activity against spores
Hypochlorite	Yes	Limited	Moderate tolerance	Inactivated	High	Highly effective	Highly effective	Moderately effective
QAC / DDAC (Quaternary Ammonium Compounds)	Yes	Moderate	Activity reduced	Moderately stable	Varied	Highly effective	Highly effective	Ineffective
Acid Sanitisers	Yes	Moderate	Activity reduced	Low reactivity	Very good	Highly effective	Highly effective	Ineffective
Aldehydes	No	Poor or moderate	No effect	Activity reduced	Moderate	Highly effective	Highly effective	Highly effective
Alcohols	No	No	No effect	Loss of activity	Very good	Moderately effective	Highly effective	Ineffective
Phenolics	Moderate	Moderate	Moderate tolerance	Moderately stable	High, better than hypochlorite	Highly effective	Highly effective	Moderately effective
Peroxyacetic Acid (PAA)	Moderate	Moderate	Limited effect	Reacts and loses reactivity	High, better than hypochlorite	Moderately effective	Highly effective	Highly effective
Chlorine Dioxide	Yes	No	No effect	Little influence	High, better than hypochlorite	Highly effective	Highly effective	Moderately effective
Amine Guanidine QUADEX®	No	High	Limited effect	Little influence	High	Highly effective	Highly effective	Highly effective

RELATIVE HEALTH AND ENVIRONMENTAL HAZARDS OF DISINFECTANTS

	Health hazard	Environmental hazard	Total hazard	Total rank
Chlorine Dioxide	1.8	1.5	3.3	41
Hypochlorite	1.2	1.5	2.7	42
Phenolics	1.7	0.8	2.5	50
Aldehydes	1.5	1.2	2.7	55
QAC / DDAC (Quaternary Ammonium Compounds)	1.0 2.0	1.5 2.0	2.5 4.0	45* 71*
Acid Sanitisers	1.7	1.0	2.7	81*
Peroxyacetic Acid (PAA)	1.7	1.0	2.7	81*
Alcohols	1.7	1.3	2.5	86
Amine Guanidine QUADEX®	Not ranked as hazardous	Not ranked as hazardous	Not ranked as hazardous	Not ranked as hazardous



SALES: Alecia 067 317 0723 | alecia@lngdental.co.za

OFFICE: (011) 979 0069 | chantelle@lngdental.co.za

 067 317 0723  @lngdental

 lng_dental  www.lngdental.com



LNG Dental